

KT-4 Four channel K Thermocouple Amplifier with CAN Bus

KT-4 CAN Bus Included Items

KT-4 Main Box Signal Harness (1' length) 4 Molex plugs and pins



Installation instructions

KT-4 should be mounted in the vehicle cabin. Tap KT-4 Signal Harness RED wire to the switched power (+12V) and BLACK wire to the ground. KT-4 has a built in auto-resettable 1A fuse. All thermocouples must be K type. LEDs under T1-T4 connectors indicate presence of thermocouple. Zeitronix K Thermocouple extension wires (sold separately) are terminated with Molex connector and standard mini K type plug to allow use of standard K probes. Many temperature probes options are available. EGT, Brake Temperature, Oil Temperature, Water Temperature, Air Intake Temperature and more.

8 EGT channels.

Additional KT-4 modules can be added to expand number of channels. For example, 8 EGT channels. In this case change CAN ID for each KT-4.

KT-4 reads temperature range: 0C-1350C, (32F-2462F) CAN Bus and digital outputs.

Analog 0-5V outputs:

V= 5/1024 x Temperature (C)

KT-4 SIGNAL HARNESS WIRE COLORS	Function
RED	+12V Power
BLACK	Ground
WHITE/RED	CAN+
WHITE/BLACK	CAN-
GREY	Analog output T1
GREEN	Analog output T2
BLUE	Analog output T3
WHITE/BLUE	Analog output T4

Default CAN Bus values:

CAN Bus ID Standard (11 bit)

CAN Bus ID (HEX) 0x004B

CAN Bus Update Rate 125 ms (8Hz)

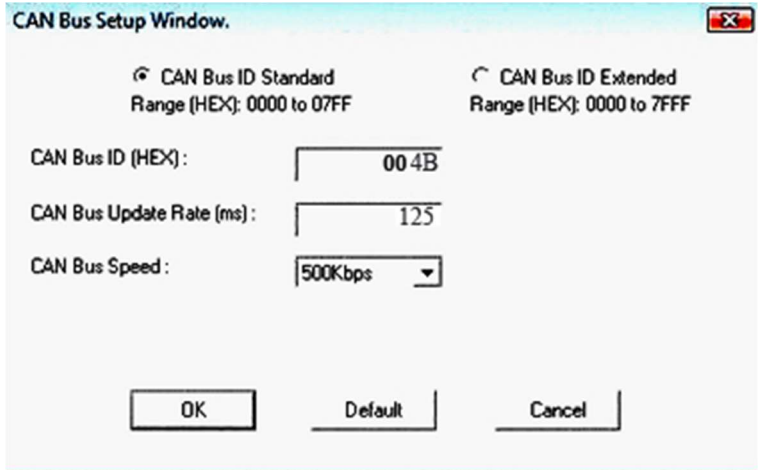
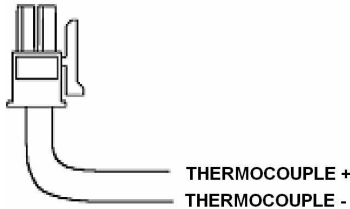
CAN Bus Speed 500 Kbps

DATA0 DATA1 T1 (in C)

DATA2 DATA3 T2 (in C)

DATA4 DATA5 T3 (in C)

DATA6 DATA7 T4 (in C)



To change CAN Bus parameters use Zeitronix Serial Cable (not included) and ZDL software.

Optional KLCD Display

All 4 temperature readings are in Celsius and set default as EGT1, EGT2, EGT3, EGT4. Minimum EGT temperature reading is 100C, maximum 1350C.

To change units to Fahrenheit, hold side button at start up. "C" can be changed to "F".

Next menu allows to rename "EGT" and drops minimum temperature reading to 0C. To restore KLCD to default settings hold side button at start up.

Warning!

This product is for automotive use only and for off road use only. Never place in a location which will obstructs your view or ability to operate the vehicle. Never tune while operating, driving. Tune your engine responsibly. Zeitronix Inc. is not responsible for any damages.